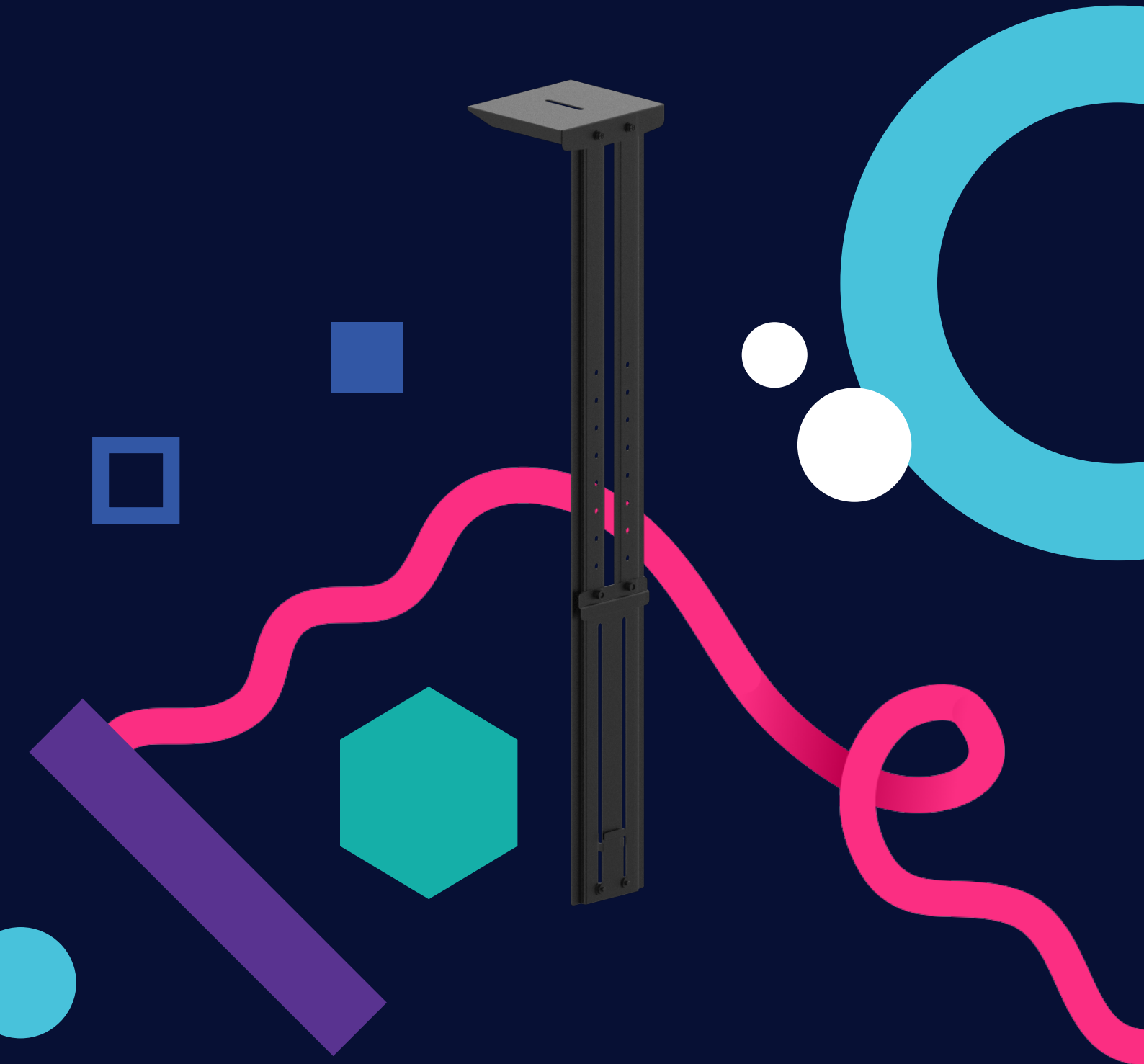


# VC Shelf for CleverAscent Trolley

The Clevertouch Camera Shelf is an all metal construction designed to fit the CleverAscent Trolley. With the flexibility to attach to either top or bottom mounted VC Camera, the finish is understated to ensure an effortless yet efficient user experience.



# VC Shelf for CleverAscent Trolley Specifications

## Features

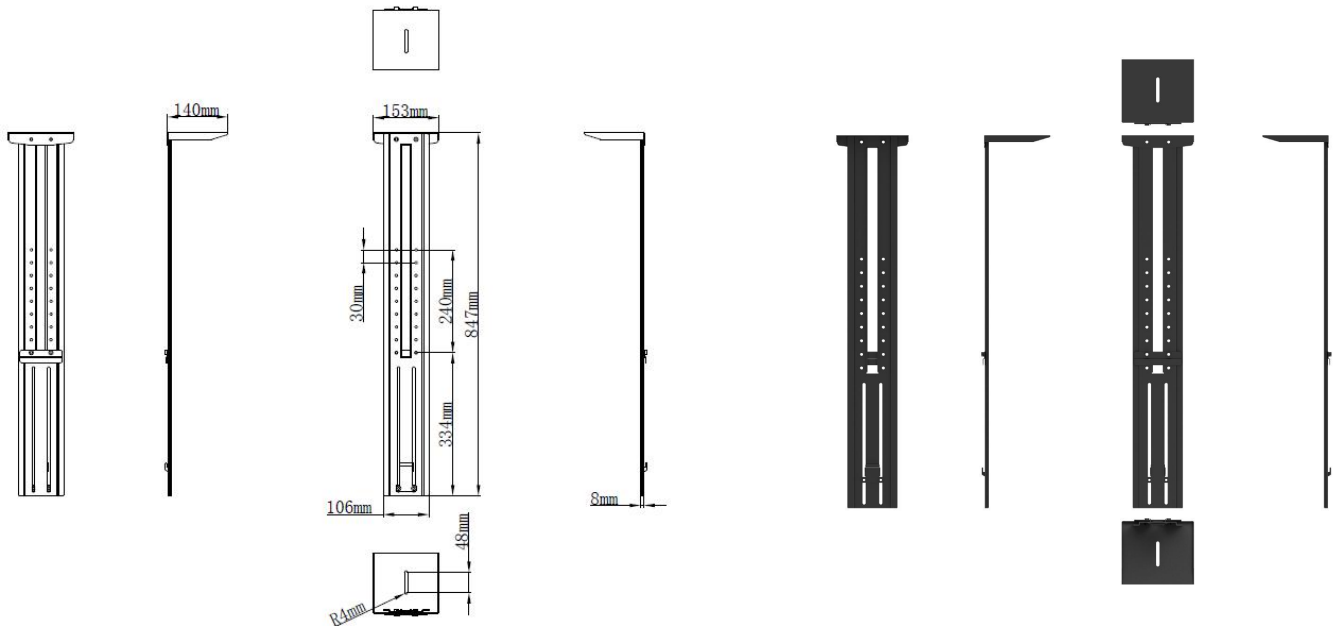
<b>Assembly Dimension</b>	847 x 153 x 140mm
<b>Dimension with Package</b>	880 x 145 x 40mm
<b>Gross Weight</b>	2.3kg
<b>Net Weight</b>	2.0kg
<b>Maximum Load-bearing</b>	3kg
<b>Adaptable Stand Models</b>	EST09/ST33/ST41B/ST51A&B/EDL02
<b>Adaptable Wall-mount Models</b>	WIB9060F/WIB9060G/WIB9060H

## Accessories

<b>Thumb Screw (fixed camera)</b>	1/4"-20 screw
<b>Installation Guide</b>	1 pc

## Environmental Conditions

<b>Operation Temperature</b>	0°C - 40°C
<b>Operation Humidity</b>	10% - 90%
<b>Storage Temperature</b>	-20°C - 60°C
<b>Storage Humidity</b>	10% - 90%
<b>Altitude Below</b>	2000 meters



## Statement

Size and weight vary by configuration and manufacturing process, please refer to the actual product. The product images are for illustrative purposes only and may slightly differ in appearance, colour, size, etc. from the actual product. The description, illustrations, etc. in this document may subject to change in accordance with the latest product specification and performance. Should the above-mentioned change in the document become necessary, the document may be updated without written notice.