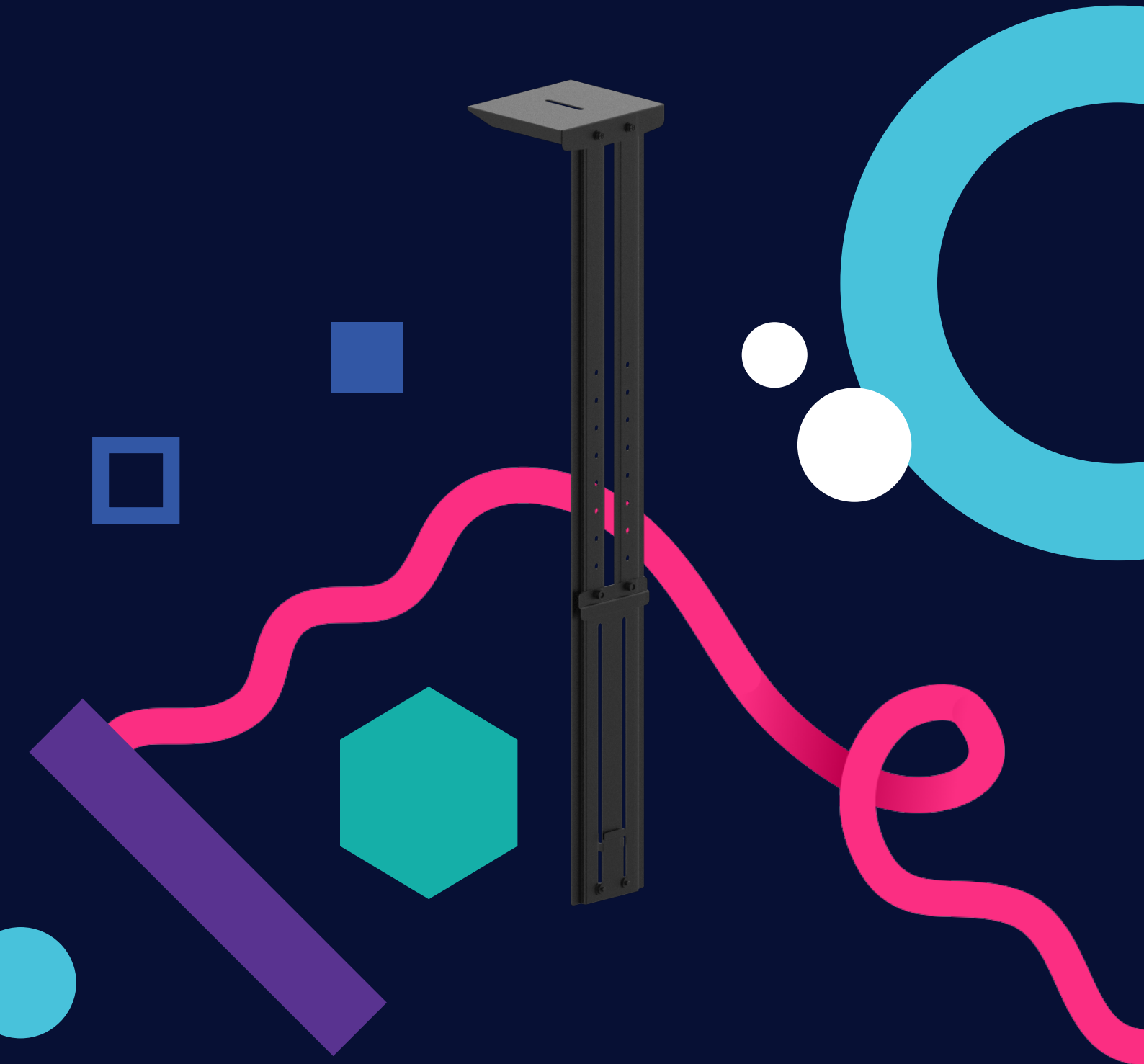


VC Shelf for CleverAscent Trolley

The Clevertouch Camera Shelf is an all metal construction designed to fit the CleverAscent Trolley. With the flexibility to attach to either top or bottom mounted VC Camera, the finish is understated to ensure an effortless yet efficient user experience.



VC Shelf for CleverAscent Trolley Specifications

Features

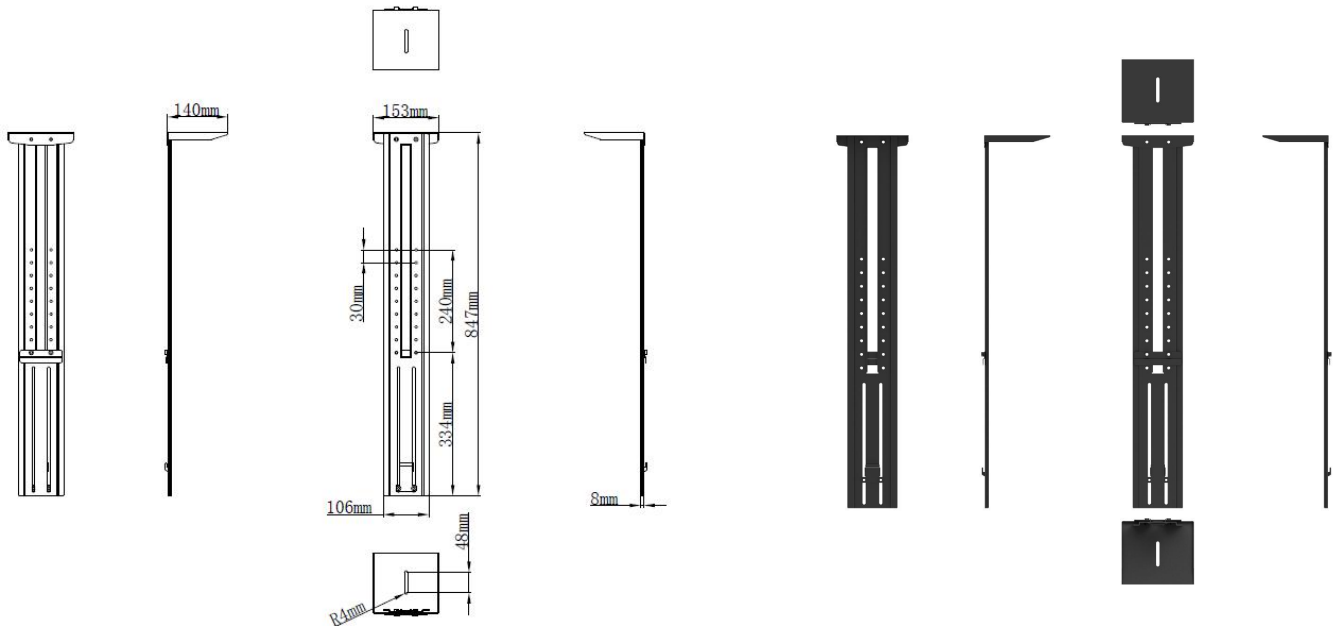
Assembly Dimension	847 x 153 x 140mm
Dimension with Package	880 x 145 x 40mm
Gross Weight	2.3kg
Net Weight	2.0kg
Maximum Load-bearing	3kg
Adaptable Stand Models	EST09/ST33/ST41B/ST51A&B/EDL02
Adaptable Wall-mount Models	WIB9060F/WIB9060G/WIB9060H

Accessories

Thumb Screw (fixed camera)	1/4"-20 screw
Installation Guide	1 pc

Environmental Conditions

Operation Temperature	0°C - 40°C
Operation Humidity	10% - 90%
Storage Temperature	-20°C - 60°C
Storage Humidity	10% - 90%
Altitude Below	2000 meters



Statement

Size and weight vary by configuration and manufacturing process, please refer to the actual product. The product images are for illustrative purposes only and may slightly differ in appearance, colour, size, etc. from the actual product. The description, illustrations, etc. in this document may subject to change in accordance with the latest product specification and performance. Should the above-mentioned change in the document become necessary, the document may be updated without written notice.